

Scaled data based on original data using  
LM-79-08 Approved Method: Electrical and Photometric Measurements of Solid-  
State Lighting Products

Test Report Prepared for  
Cooper Lighting Solutions  
(formerly Eaton)

Brand: INVUE

Report Number: P149379

Luminaire Tested: **VWM-E04-LED-E1-SL2-HSS-7030**

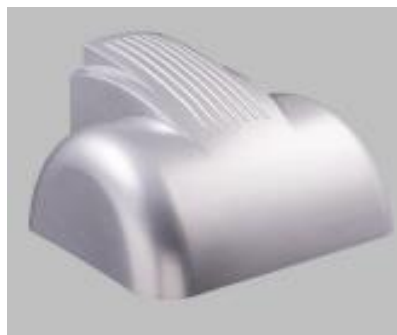
Issue Date: 03/03/2020

**Test Information**

Test Method: LM-79-08  
Report Number: P149379  
REPORT IS SCALED FROM IESNA LM-79-08 TEST DATA (P33726)  
Test Lab: INNOVATION CENTER-P3  
Issue Date: 03/03/2020  
Manufacturer: COOPER LIGHTING SOLUTIONS (FORMERLY EATON)  
Product Line: INVUE  
Catalog Number: VWM-E04-LED-E1-SL2-HSS-7030  
Description: VISION WALL MEDIUM LED LUMINAIRE  
(4) LIGHTBARS WITH AccuLED OPTICS - TYPE 2 W/ SPILL LIGHT CONTROL AND HOUSE SIDE SHIELD  
Light Source: (84) 3000K CCT, 70 CRI LEDs  
Ballast/Driver: -

**Summary**

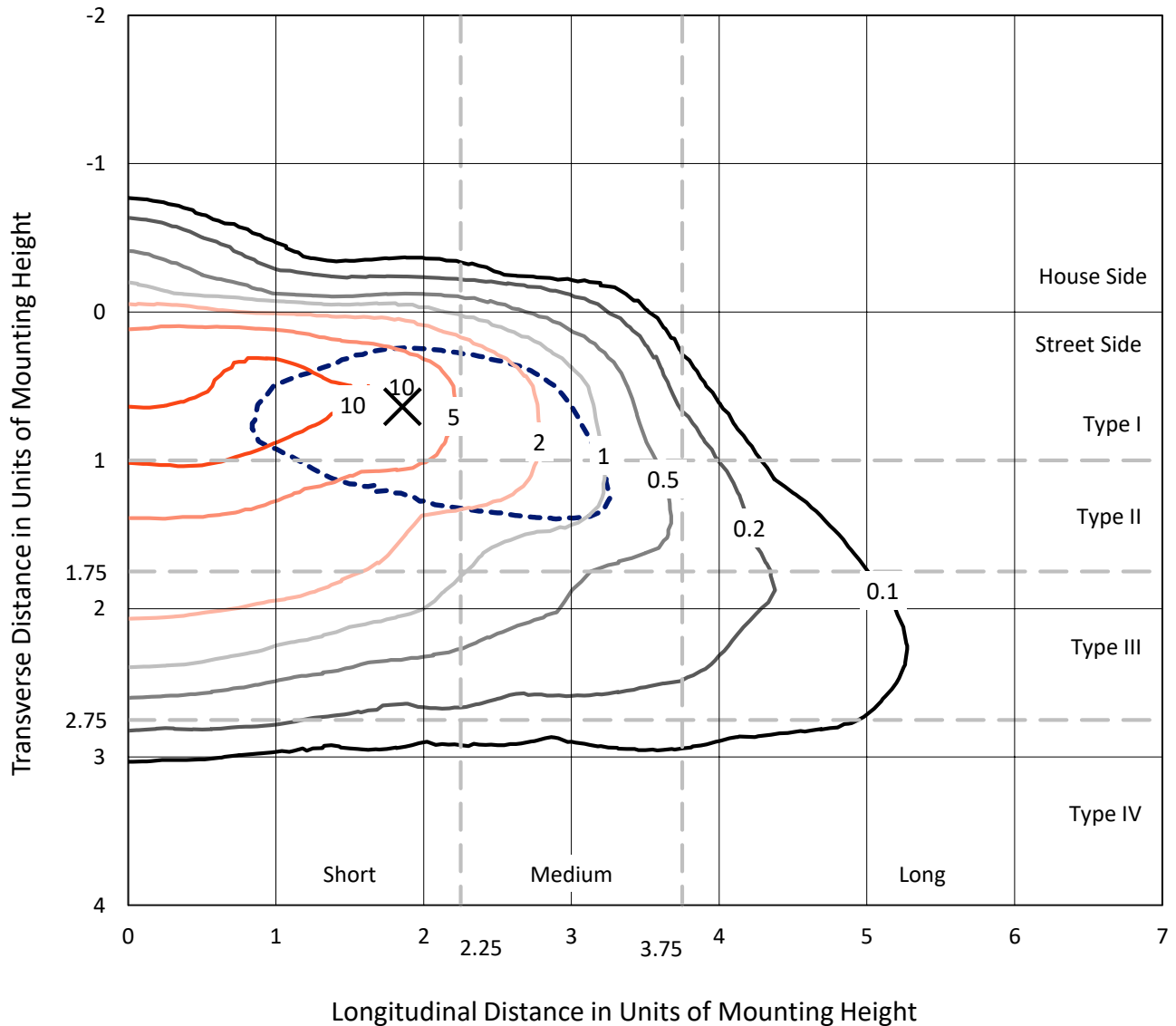
Lumens per Lamp: N/A  
Luminaire Lumens: 6698.8 lumens  
Efficiency: N/A  
Efficacy: 68.9 lumens/watt  
Luminous Opening: Rectangular (W 0.67' x L: 1' x H: 0')  
IES Classification: Type II - Short - Non-Cutoff  
BUG Rating: B0 - U0 - G2  
  
Input Watts (W): 97.2  
Input Voltage (V): NR  
Input Current (Ain): NR  
Voltage Rise (V): NR  
Power Factor: NR  
Total Harmonic Distortion (THDi): NR  
Frequency (hertz): 60  
Stabilization Time: NR  
Operation Time: NR  
Ambient Temperature (°C): NR  
Test Distance: 25 FT



REPORT NUMBER: P149379  
 CATALOG NUMBER: VWM-E04-LED-E1-SL2-HSS-7030

### Iso-Footcandle Lines of Horizontal Illumination

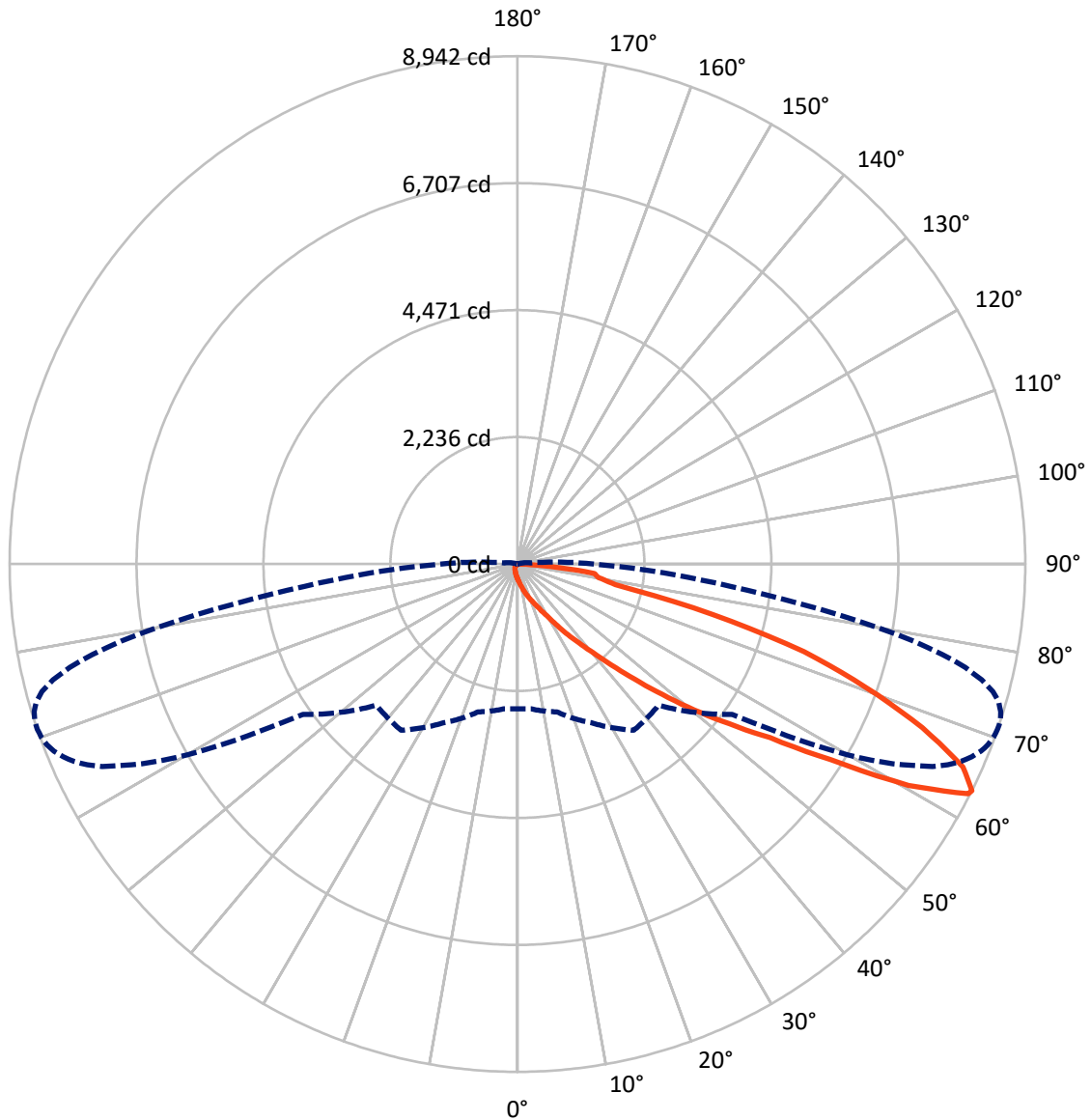
✕ Max cd  
 - - - 1/2 Max cd



Based on 10 foot mounting height. Maximum calculated value = 14.1 fc  
 Type II - Short - Non-Cutoff

REPORT NUMBER: P149379  
CATALOG NUMBER: VWM-E04-LED-E1-SL2-HSS-7030

### Luminous Intensity Polar Plot



— Vertical Plane Through 71-Deg Lateral    - - - Horizontal Cone Through 63-Deg Vertical

REPORT NUMBER: P149379

CATALOG NUMBER: VWM-E04-LED-E1-SL2-HSS-7030

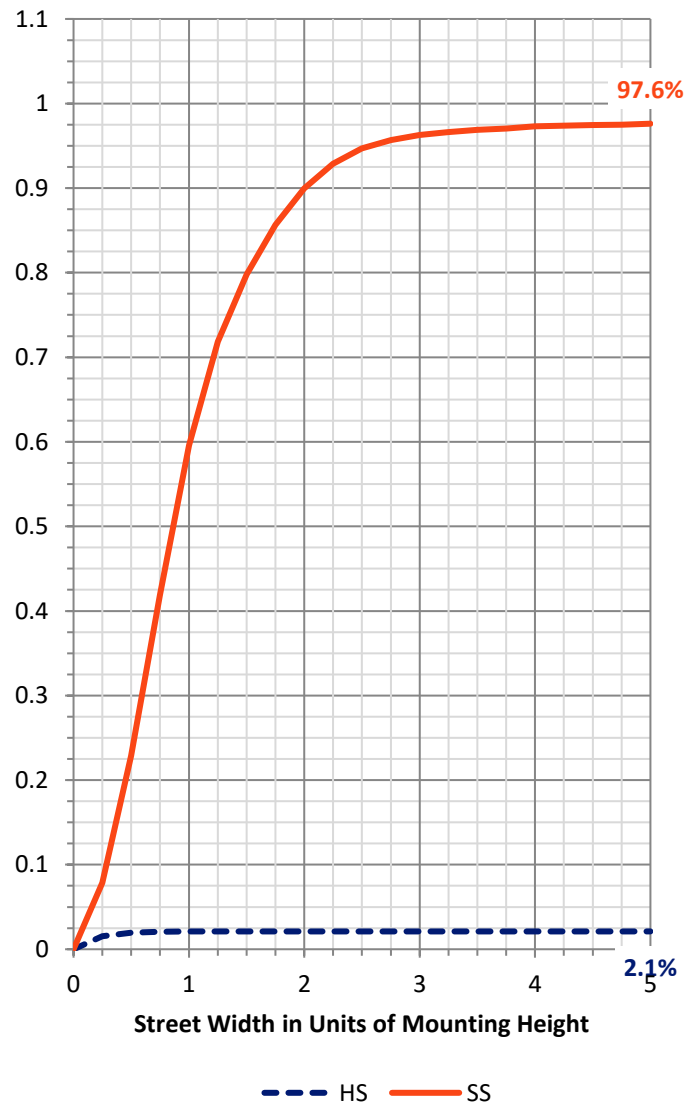
**FLUX DISTRIBUTION:**

		Downward	Upward	Total
<b>House Side</b>	Lumens	142.2	0.0	142.2
	% Fixture	2.1	0.0	2.1
<b>Street Side</b>	Lumens	6556.6	0.0	6556.6
	% Fixture	97.9	0.0	97.9
<b>Total</b>	Lumens	6698.8	0.0	6698.8
	% Fixture	100.0	0.0	100.0

**Coefficient of Utilization**

**ZONAL LUMENS:**

Zone	Lumens	% Fixture
0°-10°	28.4	0.4
10°-20°	110.1	1.6
20°-30°	223.7	3.3
30°-40°	546.6	8.2
40°-50°	1222.4	18.2
50°-60°	1718.8	25.7
60°-70°	2021.2	30.2
70°-80°	729.8	10.9
80°-90°	97.6	1.5
90°-100°	0.0	0.0
100°-110°	0.0	0.0
110°-120°	0.0	0.0
120°-130°	0.0	0.0
130°-140°	0.0	0.0
140°-150°	0.0	0.0
150°-160°	0.0	0.0
160°-170°	0.0	0.0
170°-180°	0.0	0.0
0°-90°	6698.8	100.0
0°-180°	6698.8	100.0



REPORT NUMBER: P149379

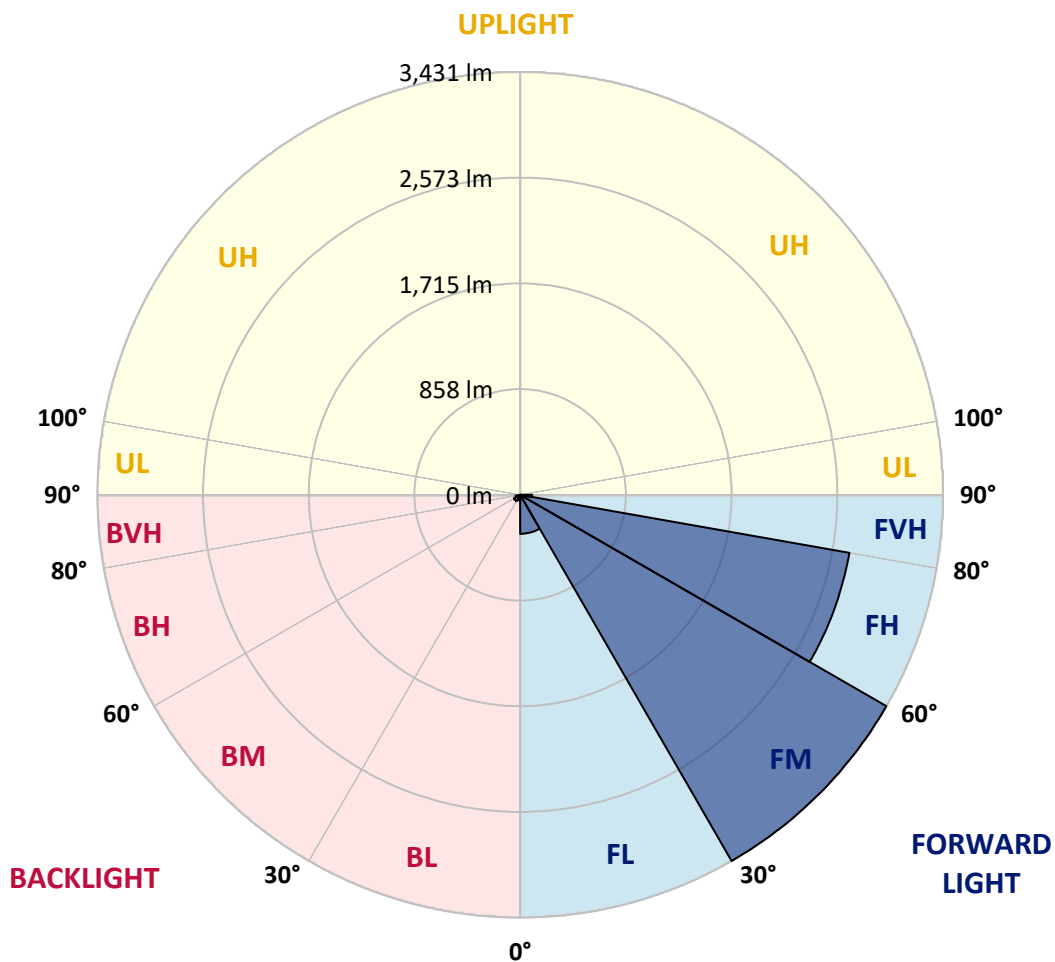
CATALOG NUMBER: VWM-E04-LED-E1-SL2-HSS-7030

**LUMINAIRE CLASSIFICATION SYSTEM LUMEN TABLE AND BUG RATING:**

Zone		Lumens	% Fixture	Zone Rating/Lumen Limit		
				B	U	G
FL	(0°-30°)	316.5	4.7			
FM	(30°-60°)	3430.6	51.2			
FH	(60°-80°)	2712.1	40.5			G2/5000
FVH	(80°-90°)	97.4	1.5			G1/100
BL	(0°-30°)	45.7	0.7	B0/110		
BM	(30°-60°)	57.3	0.9	B0/220		
BH	(60°-80°)	39.0	0.6	B0/110		G0/110
BVH	(80°-90°)	0.2	0.0			G0/10
UL	(90°-100°)	0.0	0.0		U0/0	
UH	(100°-180°)	0.0	0.0		U0/0	

**BUG Rating: B0-U0-G2**

Type II Short





REPORT NUMBER: P149379

CATALOG NUMBER: VWM-E04-LED-E1-SL2-HSS-7030

**CANDELA DISTRIBUTION (FULL):**

	0°	5°	15°	25°	35°	45°	55°	56°	57°	58°	59°
0°	257.0	257.0	257.0	257.0	257.0	257.0	257.0	257.0	257.0	257.0	257.0
2.5°	336.1	339.8	337.3	331.2	323.9	314.2	305.7	305.7	304.5	300.8	302.0
5°	440.8	442.1	437.2	422.6	409.2	388.5	365.3	362.9	360.5	356.8	355.6
7.5°	543.1	548.0	543.1	527.3	500.5	468.9	432.3	428.7	421.4	421.4	416.5
10°	647.9	647.9	643.0	624.7	600.4	555.3	509.0	503.0	494.4	492.0	484.7
12.5°	722.2	722.2	719.7	710.0	690.5	650.3	594.3	588.2	577.2	573.6	565.1
15°	751.4	751.4	752.6	761.1	762.3	744.1	685.6	680.8	669.8	660.0	656.4
17.5°	769.6	768.4	768.4	780.6	802.5	814.7	777.0	772.1	759.9	755.0	742.9
20°	809.8	807.4	800.1	800.1	820.8	863.4	863.4	862.2	848.8	845.2	839.1
22.5°	869.5	867.1	845.2	826.9	836.6	890.2	940.1	937.7	932.8	928.0	924.3
25°	966.9	958.4	920.7	867.1	858.5	915.8	998.6	1004.7	1008.3	1008.3	1010.8
27.5°	1114.3	1103.3	1036.3	936.5	898.7	957.2	1063.1	1075.3	1086.3	1088.7	1099.7
30°	1318.9	1299.4	1203.2	1057.1	970.6	1018.1	1158.1	1171.5	1187.4	1192.2	1209.3
32.5°	1655.0	1644.0	1551.5	1332.3	1147.2	1137.4	1290.9	1307.9	1328.6	1337.1	1357.8
35°	2166.5	2168.9	2093.4	1896.1	1640.4	1506.4	1528.3	1543.0	1550.3	1575.8	1586.8
37.5°	2513.5	2519.6	2536.7	2458.7	2276.1	2139.7	1968.0	1983.8	1946.0	1949.7	1950.9
40°	2703.5	2723.0	2822.9	2898.4	2883.8	2804.6	2667.0	2675.5	2604.9	2589.0	2512.3
42.5°	2830.2	2855.7	3015.3	3249.1	3368.4	3440.3	3408.6	3405.0	3350.2	3329.5	3264.9
45°	2909.3	2932.5	3133.4	3478.0	3753.3	3962.7	4049.2	4058.9	4012.7	3991.9	3938.4
47.5°	2905.7	2932.5	3148.0	3563.3	3968.8	4303.7	4547.3	4559.4	4587.5	4569.2	4572.8
50°	2744.9	2770.5	2987.3	3418.4	3905.5	4459.6	4905.3	4944.3	4989.3	5019.8	5034.4
52.5°	2550.1	2568.3	2760.8	3169.9	3635.1	4395.0	5117.2	5184.2	5251.2	5308.4	5348.6
55°	2478.2	2498.9	2649.9	2989.7	3418.4	4124.7	5215.8	5314.5	5409.5	5503.2	5580.0
57.5°	2516.0	2535.5	2643.8	2904.5	3289.3	3839.7	5243.8	5397.3	5553.2	5705.4	5856.4
60°	2654.8	2675.5	2768.1	2983.6	3255.2	3675.3	5134.2	5388.8	5648.2	5913.6	6163.3
62.5°	2600.0	2608.5	2744.9	3122.4	3498.7	3535.3	4736.0	5091.6	5487.4	5896.6	6299.7
63°	2547.6	2557.4	2696.2	3084.7	3573.0	3514.6	4613.0	4988.1	5405.8	5846.7	6285.1
65°	2310.2	2311.4	2417.3	2724.2	3490.2	3551.1	4065.0	4423.1	4902.9	5431.4	5985.5
67.5°	1724.4	1715.9	1818.2	2052.0	2740.1	3552.3	3489.0	3689.9	4023.6	4492.5	4989.3
70°	611.3	597.9	763.6	1087.5	1707.4	2905.7	2998.2	3011.6	3104.2	3357.5	3669.2
72.5°	198.5	202.2	243.6	398.2	786.7	1955.8	2714.5	2673.1	2648.7	2647.5	2688.9
75°	79.2	80.4	97.4	176.6	353.2	942.6	2377.1	2400.3	2408.8	2421.0	2434.4
77.5°	37.8	41.4	54.8	98.6	175.4	466.4	1701.3	1897.3	2009.4	2095.8	2148.2
80°	13.4	15.8	30.4	60.9	81.6	214.3	896.3	1081.4	1245.8	1457.7	1640.4
82.5°	0.0	0.0	6.1	42.6	45.1	86.5	367.8	431.1	493.2	639.3	820.8
85°	0.0	0.0	0.0	12.2	13.4	14.6	124.2	149.8	168.1	196.1	226.5
87.5°	0.0	0.0	0.0	0.0	0.0	0.0	1.2	3.7	7.3	18.3	28.0
90°	0.0	0.0	0.0	0.0	0.0	0.0	0.0	0.0	0.0	0.0	0.0



REPORT NUMBER: P149379  
 CATALOG NUMBER: VWM-E04-LED-E1-SL2-HSS-7030

**CANDELA DISTRIBUTION (continued):**

	60°	61°	62°	64°	65°	66°	67°	68°	69°	70°	71°
0°	257.0	257.0	257.0	257.0	257.0	257.0	257.0	257.0	257.0	257.0	257.0
2.5°	299.6	298.4	298.4	295.9	294.7	292.3	291.1	287.4	286.2	286.2	286.2
5°	354.4	349.5	347.1	341.0	337.3	336.1	330.0	327.6	323.9	325.2	319.1
7.5°	415.3	406.7	403.1	394.6	392.1	383.6	381.2	375.1	371.4	364.1	361.7
10°	482.2	471.3	465.2	451.8	448.2	442.1	434.8	427.4	421.4	414.1	410.4
12.5°	559.0	549.2	544.4	526.1	517.6	509.0	499.3	489.6	479.8	473.7	465.2
15°	649.1	633.3	628.4	611.3	596.7	585.8	572.4	560.2	552.9	540.7	532.2
17.5°	738.0	722.2	718.5	692.9	677.1	669.8	655.2	639.3	625.9	613.8	600.4
20°	826.9	815.9	806.2	781.8	764.8	752.6	733.1	717.3	706.3	689.3	672.2
22.5°	915.8	904.8	897.5	871.9	856.1	839.1	822.0	805.0	789.1	768.4	748.9
25°	1007.1	999.8	996.2	973.0	958.4	942.6	925.5	906.0	886.6	863.4	842.7
27.5°	1102.1	1104.5	1097.2	1092.4	1076.5	1065.6	1038.8	1025.4	1010.8	982.8	957.2
30°	1222.7	1230.0	1227.5	1231.2	1221.5	1214.1	1193.4	1176.4	1159.3	1132.6	1103.3
32.5°	1374.9	1384.6	1389.5	1402.9	1398.0	1395.6	1389.5	1365.2	1353.0	1306.7	1294.5
35°	1609.9	1605.1	1625.8	1636.7	1631.9	1629.4	1622.1	1608.7	1594.1	1561.2	1530.8
37.5°	1915.6	1920.5	1927.8	1905.9	1891.2	1890.0	1868.1	1854.7	1834.0	1797.5	1760.9
40°	2475.8	2445.3	2411.2	2318.7	2278.5	2255.4	2190.8	2172.6	2137.2	2087.3	2049.6
42.5°	3204.0	3173.6	3071.3	2916.6	2833.8	2719.3	2667.0	2602.4	2552.5	2470.9	2427.1
45°	3927.4	3839.7	3827.5	3647.3	3545.0	3394.0	3300.2	3191.9	3078.6	2971.4	2893.5
47.5°	4537.5	4518.0	4458.4	4348.8	4253.8	4127.1	4006.6	3839.7	3722.8	3570.6	3430.5
50°	5025.9	5024.6	5002.7	4939.4	4860.2	4757.9	4652.0	4510.7	4378.0	4191.7	4041.9
52.5°	5391.2	5410.7	5418.0	5398.5	5368.1	5277.9	5224.4	5106.2	4994.2	4835.9	4673.9
55°	5659.1	5731.0	5767.5	5808.9	5800.4	5768.7	5766.3	5689.6	5638.4	5513.0	5398.5
57.5°	5990.4	6108.5	6221.7	6422.7	6430.0	6500.6	6537.2	6573.7	6583.4	6533.5	6495.7
60°	6411.7	6652.8	6867.2	7287.3	7396.9	7569.8	7681.9	7803.7	7907.2	7915.7	7913.3
62.5°	6708.9	7080.3	7426.1	8049.7	8262.8	8462.5	8612.3	8730.4	8802.3	8875.3	8909.4
63°	6717.4	7124.1	7491.9	8134.9	8359.0	8549.0	8691.4	8801.0	8876.5	8920.4	8942.3
65°	6511.6	7004.8	7443.2	8083.8	8294.4	8485.6	8559.9	8631.8	8668.3	8685.4	8620.8
67.5°	5519.1	6001.3	6512.8	7228.9	7409.1	7638.0	7698.9	7735.5	7752.5	7748.9	7694.1
70°	4127.1	4531.4	5100.1	5918.5	6157.2	6381.3	6520.1	6579.8	6599.3	6593.2	6511.6
72.5°	2881.3	3118.8	3587.6	4498.6	4823.7	5111.1	5282.8	5371.7	5390.0	5353.5	5277.9
75°	2419.8	2431.9	2537.9	3036.0	3340.4	3647.3	3840.9	3897.0	3860.4	3749.6	3557.2
77.5°	2160.4	2187.2	2187.2	2261.5	2321.1	2406.4	2424.6	2288.2	2129.9	1925.3	1759.7
80°	1812.1	1905.9	1971.6	2026.4	2032.5	2015.5	1970.4	1893.7	1771.9	1616.0	1443.1
82.5°	1100.9	1286.0	1361.5	1644.0	1782.9	1876.6	1869.3	1767.0	1674.5	1512.5	1365.2
85°	277.7	299.6	325.2	422.6	473.7	578.5	644.2	674.7	685.6	629.6	569.9
87.5°	26.8	18.3	30.4	23.1	32.9	24.4	32.9	30.4	37.8	40.2	43.8
90°	0.0	0.0	0.0	0.0	0.0	0.0	0.0	0.0	0.0	0.0	0.0





REPORT NUMBER: P149379  
 CATALOG NUMBER: VWM-E04-LED-E1-SL2-HSS-7030

**CANDELA DISTRIBUTION (continued):**

	72°	73°	74°	75°	76°	77°	78°	79°	80°	81°	82°
0°	257.0	257.0	257.0	257.0	257.0	257.0	257.0	257.0	257.0	257.0	257.0
2.5°	283.7	282.5	281.3	280.1	278.9	277.7	275.2	275.2	272.8	271.6	270.4
5°	315.4	313.0	311.8	309.3	305.7	303.2	299.6	294.7	291.1	289.8	287.4
7.5°	355.6	349.5	347.1	343.4	338.5	331.2	326.4	322.7	316.6	313.0	305.7
10°	400.7	394.6	387.3	380.0	372.6	364.1	358.0	353.2	343.4	338.5	330.0
12.5°	457.9	446.9	438.4	428.7	418.9	409.2	401.9	387.3	378.7	367.8	360.5
15°	516.3	506.6	496.9	484.7	470.1	454.2	446.9	433.5	422.6	405.5	395.8
17.5°	587.0	568.7	554.1	539.5	526.1	511.5	496.9	476.2	460.3	445.7	426.2
20°	656.4	634.5	618.6	599.2	579.7	556.5	539.5	524.9	503.0	483.5	462.8
22.5°	730.7	708.8	683.2	663.7	636.9	618.6	595.5	571.1	549.2	523.7	498.1
25°	820.8	797.7	768.4	742.9	712.4	686.8	658.8	630.8	604.0	574.8	541.9
27.5°	931.6	907.3	875.6	845.2	805.0	773.3	746.5	708.8	674.7	638.1	600.4
30°	1071.7	1044.9	1005.9	962.1	921.9	886.6	848.8	798.9	761.1	717.3	668.6
32.5°	1254.3	1222.7	1170.3	1128.9	1079.0	1032.7	980.3	930.4	876.8	819.6	763.6
35°	1484.5	1455.3	1394.4	1333.5	1278.7	1223.9	1158.1	1100.9	1025.4	956.0	884.1
37.5°	1723.2	1670.8	1614.8	1549.0	1480.8	1415.1	1334.7	1255.6	1169.1	1093.6	1003.5
40°	1996.0	1932.6	1886.4	1815.7	1719.5	1625.8	1551.5	1452.8	1344.5	1243.4	1137.4
42.5°	2369.8	2299.2	2216.4	2109.2	2039.8	1930.2	1834.0	1717.1	1574.6	1461.4	1333.5
45°	2802.2	2706.0	2625.6	2522.1	2438.0	2301.6	2189.6	2033.7	1891.2	1742.7	1586.8
47.5°	3295.4	3176.0	3059.1	2956.8	2822.9	2688.9	2546.4	2380.8	2198.1	2034.9	1849.8
50°	3861.6	3692.4	3530.4	3398.9	3215.0	3060.3	2905.7	2719.3	2517.2	2329.7	2119.0
52.5°	4491.2	4295.2	4080.8	3878.7	3665.6	3467.1	3280.8	3066.4	2841.1	2612.2	2377.1
55°	5251.2	5103.8	4851.7	4594.8	4309.8	4044.3	3804.4	3538.9	3264.9	2964.1	2716.9
57.5°	6440.9	6369.1	6158.4	5901.5	5530.0	5207.3	4800.6	4475.4	4078.4	3664.4	3345.3
60°	8053.3	7964.4	7846.3	7638.0	7343.3	6904.9	6456.8	5951.4	5347.4	4773.8	4229.4
62.5°	8913.1	8881.4	8785.2	8641.5	8366.3	8020.4	7568.6	7013.3	6331.3	5634.8	4940.6
63°	8938.7	8898.5	8815.7	8669.5	8427.2	8092.3	7649.0	7109.5	6442.2	5732.2	5023.4
65°	8592.8	8577.0	8492.9	8333.4	8167.8	7912.0	7568.6	7104.6	6544.5	5873.5	5168.3
67.5°	7621.0	7573.5	7444.4	7395.7	7280.0	7102.2	6840.4	6521.3	6120.7	5593.4	4984.5
70°	6445.8	6375.2	6213.2	6126.8	5985.5	5873.5	5713.9	5486.2	5239.0	4871.2	4417.0
72.5°	5200.0	5053.9	4905.3	4680.0	4482.7	4283.0	4106.4	3945.7	3674.1	3525.5	3180.9
75°	3377.0	3111.5	2857.0	2516.0	2209.1	1937.5	1673.3	1539.3	1260.4	1147.2	985.2
77.5°	1602.6	1454.1	1254.3	1099.7	902.4	736.8	601.6	451.8	354.4	277.7	211.9
80°	1293.3	1167.9	1047.3	907.3	758.7	605.2	464.0	347.1	246.0	170.5	120.6
82.5°	1153.3	1016.9	868.3	772.1	671.0	549.2	450.6	367.8	271.6	198.5	135.2
85°	448.2	377.5	291.1	237.5	185.1	152.2	137.6	95.0	74.3	58.5	45.1
87.5°	39.0	31.7	25.6	17.0	18.3	9.7	11.0	7.3	6.1	6.1	4.9
90°	0.0	0.0	0.0	0.0	0.0	0.0	0.0	0.0	0.0	0.0	0.0



REPORT NUMBER: P149379

CATALOG NUMBER: VWM-E04-LED-E1-SL2-HSS-7030

**CANDELA DISTRIBUTION (continued):**

	83°	84°	85°	86°	87°	88°	89°	90°	95°	105°	115°
0°	257.0	257.0	257.0	257.0	257.0	257.0	257.0	257.0	257.0	257.0	257.0
2.5°	269.1	267.9	266.7	264.3	264.3	261.8	260.6	259.4	253.3	239.9	228.9
5°	282.5	280.1	277.7	274.0	271.6	267.9	265.5	261.8	248.4	222.9	200.9
7.5°	302.0	297.1	293.5	286.2	282.5	277.7	274.0	267.9	246.0	207.0	176.6
10°	325.2	316.6	310.5	302.0	294.7	288.6	282.5	274.0	243.6	190.0	154.7
12.5°	353.2	343.4	331.2	321.5	311.8	303.2	294.7	283.7	239.9	175.4	137.6
15°	381.2	366.6	358.0	344.6	331.2	319.1	306.9	297.1	241.1	159.5	123.0
17.5°	412.8	398.2	380.0	365.3	350.7	334.9	320.3	300.8	235.0	147.4	112.0
20°	443.3	422.6	405.5	387.3	366.6	347.1	328.8	311.8	230.2	135.2	102.3
22.5°	476.2	451.8	429.9	406.7	381.2	359.3	337.3	315.4	221.6	124.2	93.8
25°	516.3	488.3	456.7	428.7	401.9	375.1	347.1	320.3	213.1	114.5	87.7
27.5°	565.1	528.5	496.9	461.5	423.8	389.7	359.3	330.0	204.6	107.2	81.6
30°	627.2	584.5	539.5	494.4	454.2	415.3	372.6	336.1	196.1	99.9	75.5
32.5°	710.0	656.4	601.6	549.2	495.6	445.7	400.7	353.2	191.2	93.8	69.4
35°	819.6	750.2	683.2	617.4	552.9	492.0	433.5	380.0	191.2	86.5	62.1
37.5°	923.1	842.7	757.5	675.9	599.2	528.5	459.1	394.6	181.5	80.4	56.0
40°	1035.1	938.9	839.1	742.9	650.3	562.6	483.5	409.2	172.9	73.1	49.9
42.5°	1206.8	1085.1	954.8	842.7	731.9	623.5	524.9	437.2	162.0	65.8	43.8
45°	1432.1	1277.5	1124.0	987.6	846.4	713.6	596.7	488.3	159.5	59.7	37.8
47.5°	1673.3	1490.6	1310.4	1136.2	970.6	815.9	675.9	545.6	159.5	53.6	32.9
50°	1913.2	1684.2	1491.8	1289.7	1103.3	920.7	753.8	605.2	160.7	48.7	26.8
52.5°	2129.9	1885.2	1669.6	1435.8	1230.0	1018.1	836.6	663.7	158.3	42.6	21.9
55°	2430.7	2143.3	1893.7	1635.5	1394.4	1155.7	949.9	751.4	159.5	37.8	18.3
57.5°	2984.8	2647.5	2346.7	2008.2	1730.5	1422.4	1172.7	931.6	174.1	31.7	13.4
60°	3780.1	3341.6	2919.1	2506.2	2153.1	1786.5	1462.6	1178.8	204.6	25.6	9.7
62.5°	4314.7	3741.1	3236.9	2781.5	2371.1	1987.5	1634.3	1311.6	225.3	20.7	6.1
63°	4369.5	3776.4	3269.8	2799.7	2380.8	1997.2	1641.6	1321.3	226.5	19.5	6.1
65°	4473.0	3837.3	3288.1	2803.4	2371.1	1983.8	1636.7	1320.1	228.9	15.8	4.9
67.5°	4354.9	3743.5	3182.1	2698.6	2285.8	1904.6	1575.8	1271.4	227.7	11.0	3.7
70°	3894.5	3387.9	2894.7	2444.1	2069.0	1724.4	1434.6	1159.3	209.5	7.3	2.4
72.5°	2859.4	2514.8	2132.4	1807.2	1558.8	1294.5	1104.5	870.7	162.0	4.9	1.2
75°	847.6	772.1	649.1	572.4	505.4	417.7	371.4	289.8	82.8	2.4	0.0
77.5°	169.3	153.4	137.6	125.4	118.1	101.1	96.2	79.2	34.1	1.2	0.0
80°	88.9	73.1	62.1	54.8	47.5	39.0	32.9	26.8	6.1	0.0	0.0
82.5°	85.2	57.2	41.4	34.1	29.2	23.1	18.3	13.4	3.7	0.0	0.0
85°	31.7	24.4	18.3	14.6	12.2	11.0	8.5	7.3	0.0	0.0	0.0
87.5°	4.9	3.7	3.7	2.4	2.4	1.2	1.2	1.2	0.0	0.0	0.0
90°	0.0	0.0	0.0	0.0	0.0	0.0	0.0	0.0	0.0	0.0	0.0



REPORT NUMBER: P149379

CATALOG NUMBER: VWM-E04-LED-E1-SL2-HSS-7030

**CANDELA DISTRIBUTION (continued):**

	125°	135°	145°	155°	165°	175°	180°
0°	257.0	257.0	257.0	257.0	257.0	257.0	257.0
2.5°	218.0	208.2	203.4	197.3	197.3	196.1	198.5
5°	181.5	168.1	158.3	151.0	152.2	148.6	149.8
7.5°	153.4	140.0	131.5	126.7	125.4	124.2	124.2
10°	132.7	120.6	113.3	109.6	108.4	108.4	108.4
12.5°	118.1	105.9	99.9	97.4	97.4	96.2	96.2
15°	105.9	96.2	90.1	87.7	87.7	86.5	87.7
17.5°	96.2	86.5	81.6	79.2	79.2	77.9	77.9
20°	87.7	79.2	74.3	70.6	70.6	69.4	70.6
22.5°	80.4	71.9	65.8	63.3	62.1	60.9	62.1
25°	73.1	64.5	58.5	54.8	53.6	53.6	52.4
27.5°	67.0	58.5	51.1	47.5	46.3	46.3	45.1
30°	60.9	51.1	43.8	40.2	39.0	39.0	39.0
32.5°	54.8	43.8	37.8	34.1	32.9	32.9	32.9
35°	48.7	37.8	31.7	28.0	26.8	26.8	26.8
37.5°	41.4	31.7	24.4	21.9	20.7	19.5	19.5
40°	35.3	24.4	18.3	15.8	13.4	13.4	13.4
42.5°	29.2	19.5	13.4	9.7	8.5	7.3	8.5
45°	24.4	14.6	8.5	4.9	3.7	3.7	3.7
47.5°	19.5	9.7	3.7	1.2	1.2	1.2	1.2
50°	14.6	6.1	1.2	0.0	0.0	1.2	1.2
52.5°	11.0	3.7	0.0	0.0	0.0	0.0	0.0
55°	6.1	1.2	0.0	0.0	0.0	0.0	0.0
57.5°	3.7	0.0	0.0	0.0	0.0	0.0	0.0
60°	2.4	0.0	0.0	0.0	0.0	0.0	0.0
62.5°	1.2	0.0	0.0	0.0	0.0	0.0	0.0
63°	1.2	0.0	0.0	0.0	0.0	0.0	0.0
65°	1.2	0.0	0.0	0.0	0.0	0.0	0.0
67.5°	0.0	0.0	0.0	0.0	0.0	0.0	0.0
70°	0.0	0.0	0.0	0.0	0.0	0.0	0.0
72.5°	0.0	0.0	0.0	0.0	0.0	0.0	0.0
75°	0.0	0.0	0.0	0.0	0.0	0.0	0.0
77.5°	0.0	0.0	0.0	0.0	0.0	0.0	0.0
80°	0.0	0.0	0.0	0.0	0.0	0.0	0.0
82.5°	0.0	0.0	0.0	0.0	0.0	0.0	0.0
85°	0.0	0.0	0.0	0.0	0.0	0.0	0.0
87.5°	0.0	0.0	0.0	0.0	0.0	0.0	0.0
90°	0.0	0.0	0.0	0.0	0.0	0.0	0.0

(END OF REPORT)